

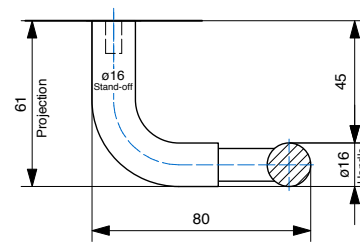
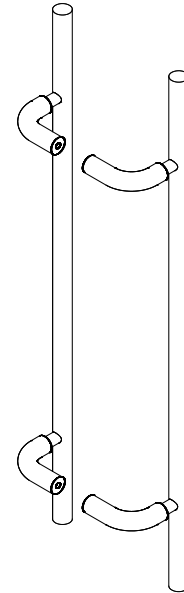


DDA Compliant - 316 Marine Grade Stainless Steel

CODE	SECTION	PROJECTION	LENGTH	CTC
BAH-199/A	Dia 16 19	61 64	400	200
BAH-199/B	Dia 16 19	61 64	500	300
BAH-199/C	Dia 16 19	61 64	600	400
BAH-199/D	Dia 16 19	61 64	700	500
BAH-199/E	Dia 16 19	61 64	800	600
BAH-199/F	Dia 16 19	61 64	900	700
BAH-199/G	Dia 16 19	61 64	1000	800
BAH-199/H	Dia 16 19	61 64	1100	900
BAH-199/I	Dia 16 19	61 64	1200	1000
BAH-199/J	Dia 16 19	61 64	1300	1100
BAH-199/K	Dia 16 19	61 64	1400	1200
BAH-199/L	Dia 16 19	61 64	1500	1300

• Special sizes available upon request

FINISHES	
Standard:	SSS/PSS
Options:	Powdercoat Dulux
Electroplate:	SBN ORB BN CO

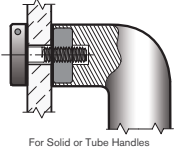


How to specify

	PRODUCT CODE	LENGTH	FINISH	FIXING	DOOR TYPE
Example:	BAH-199/A	400mm	SSS	B	GD

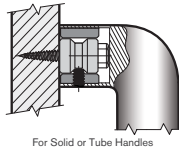
D = DISK FIX

Disk fixed - **Single**



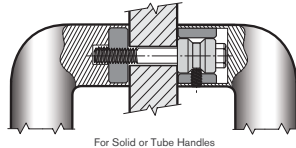
C = CONCEALED FIX

Coach Bolt fixed - **Single**



B = BACK to BACK FIX

Back to Back fixed - **Pair**



PLEASE SPECIFY THE DOOR TYPE
GD: Glass
TM: Timber
AL: Aluminium